



THE RUMBLE SHEET

APRIL 2025 - VOLUME 59 - ISSUE 4

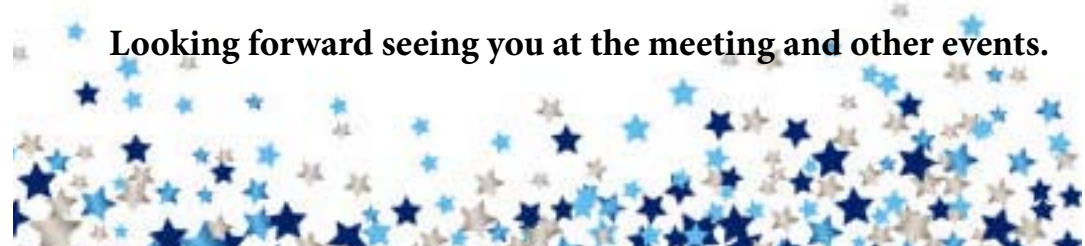
- 2 *Finer Points*
- 3 *Meeting Minutes, Finer Points Continued,*
- 4 *Saturday Drive to Woolaroc, BA Community Theater & Dinner, April Breakfast*
- 5 *March Breakfast Article, Meeting Photos*
- 6 *Mens' Coffee Schedule, Ladies' Lunch March Breakfast Pix*
- 7 *Calendar*
- 8 *Sunshine Report, Birthdays & Anniversaries Merchandise, Cookie List, 3 April Fool's Stories*
- 9 *2025 Calendar*
- 10 *Rachel's Kitchen Pix,*
- 11 *More Amish Lunch Pix*
- 12 *Officers, Board, Committee Chairs*
- 13 *About the Model A Club*

PRESIDENT'S MESSAGE BY ROY CAIL

The team led by Tim Bodine has been very busy laying out the plans for our Spring Tour. We will be traveling to Ponca City to spend a long weekend on April 24 – 27. Remember to make your hotel reservations at the Holiday Inn Express (580-762-3700) no later than April 1, ask for special Model A Ford rate of \$120/night plus taxes/fees). You will find an outline of activities attached to the Rumble Sheet as well as a Registration Form. The Registration Form is due April 1. Checks should be made out to the Tulsa Model A Ford Club. We will have a hospitality room at the hotel for all three nights.

Thanks to Tim Bodine for leading a tour after breakfast in March and for the outstanding tour on March 15 to Rachel's Kitchen plus the other stops for food shopping. Both tours were very successful, "hats off for a job well done". The Board was quite busy at our monthly meeting planning a number of activities for the balance of the year. We also know planning this much for future months means some activities/tours may change. However, we would rather show future activities, so you have visibility to future activities. If we need to make a change to dates, we will give you as much notice as possible. As you will note we have a mix of drives after breakfast as well as day trips/tours. Please refer to the April Rumble Sheet for the 2025 calendar.

- Reminder, we will not be providing cold beverages for the April meeting. Please feel free to bring your own non-acholic beverage.
- The 2025 Directory has been published and distributed. Steve Reiser will be making minor changes as we go forward. If you need a correction to your contact information contact Steve (steveraiser@hotmail.com) directly.
- Reminder, April 5 Breakfast at Big Biscuit in Owasso, see calendar and reminder for address.
- Reminder, April 6 Broken Arrow Community Theater, On Golden Pond performance, 2p.m. Dinner to follow at the Rib Crib.
- Reminder, Member meeting April 15, Chili Dinner. See Jackie Dunn for signup sheet. Please note the start time for the April meeting is 6:30p.m.



Looking forward seeing you at the meeting and other events.

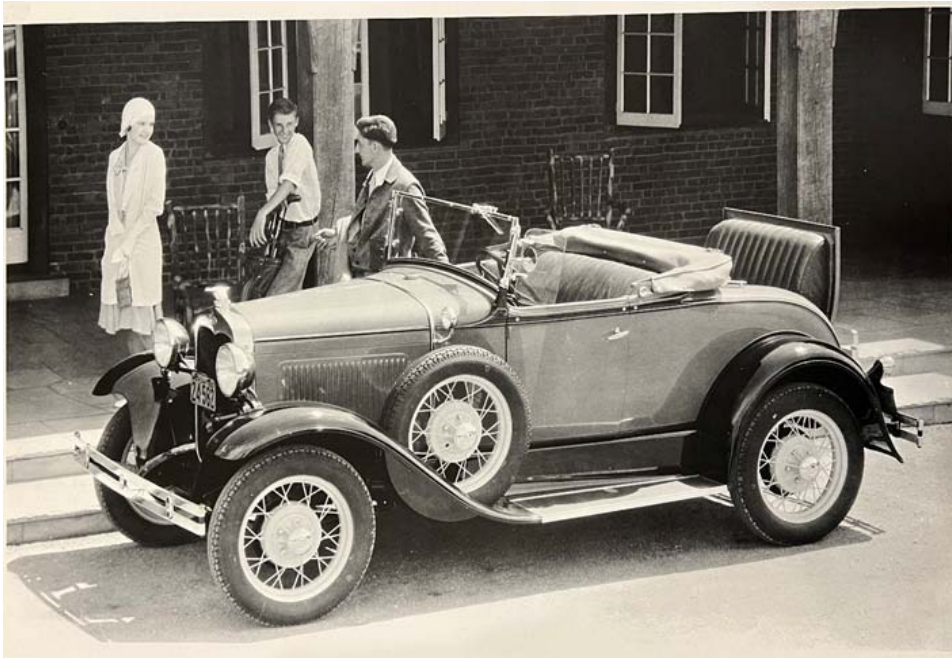
THE FINER POINTS

by Chris DuVall

Wow, it's hard to believe March is once again passing us by! I actually put the top down on my 1931 DeLuxe Roadster driving to work today. I've owned the car for nearly 11 years, and it has been remarkably reliable during that time. Driving the car across the north rim of the Grand Canyon shortly after purchasing is not something I will soon forget!



Over the years, I have removed the luggage rack and changed the whitewalls for blackwalls. I have also removed the side mount spare. I tend to prefer for the car to be as close to the way it left the factory as possible. Of course, this begs the question, "How do I know the car did not come with a luggage rack and side mount?"



Detail Tool & Machine

*When it has to
be done right*



Wire EDM Specialist
Tooling & Job Shop Work
Conventional and CNC Machining

Dave Pilmaier
detailtool@hotmail.com

(918) 697-2589

Some enthusiasts believe a car must have dual side mounts in order to be a DeLuxe, but that simply is not the case. Due to declining sales during the beginnings of the Great Depression, Ford introduced the DeLuxe Roadster in August of 1930 for a price of \$520 F.O.B. Detroit. This was considerably more than the \$435 for a regular Roadster. So, what did your extra \$85 get you? You received cowl lights, two full-length bumpers, genuine leather upholstery in the front seat, a rumble seat in artificial leather to match the front seat, padded door panels, cowl panel pockets, natural wood top bows, a tan top and top boot, chrome side mirror, chrome wiper motor, chrome windshield frame, luggage rack, and one (not two) side mount on the driver's side. The above factory photo displays all of these features beautifully, and it even has an additional accessory: the quail ornament.

So, why in the world would I remove my side mount and luggage rack? I did so because my car is a 1931, not a 1930. As the Great Depression continued to worsen into 1931, the DeLuxe Roadster outsold

the standard Roadster; however, sales were still declining overall. In 1930, Ford sold 124,219 Roadsters; whereas, in 1931, Ford sold less than half that many Roadsters: 58,496. To combat declining sales in early 1931, Ford reduced the price of the DeLuxe Roadster to \$475. In order to achieve this price point, Ford removed three items from the list of standard equipment: the driver's side mount, the luggage rack, and the full-length rear bumper. Of course, this left us with the stunningly elegant and simple 1931 DeLuxe Roadster pictured on the next page.



MEETING MINUTES

March 18, 2025

Hardesty Regional Library, Tulsa, OK

Meeting called to order by President Roy Cail at 7:00 PM with 44 members present. Roy led the Pledge of Allegiance and Don Reed led a prayer. Program Director Jackie Dunn introduced the evening's presenter Rhys Martin, President of the Oklahoma Route 66 association who reviewed the history of Route 66, especially the highlights of the highway and attractions in Oklahoma. Preparations have been underway for some time to celebrate the centennial of the opening of Route 66 in 1926. Mr. Martin also reviewed his book "Lost Restaurants of Oklahoma" and signed several copies for members who purchase one. Lastly, Tulsa is planning a Route 66 Centennial Celebration for May 30, 2026.

Following Mr. Martin's very engaging review, Jackie Dunn presented him with a framed certificate of appreciation, a Route 66 plaque and a Tulsa Model A Ford Club cap.

A drawing for Route 66 memorabilia was made with Mr. Martin drawing the following winners: 1) John Conway 2) Mel Burton 3) John Bornefeld. The 50/50 raffle, tickets, sold by Sam Slavens, was won again by Sam, TWICE! Sam declined to accept the \$56 purse so the third drawing was won by Johnny Nicholson.

Ken Brust introduced his guests, Tom & Kathy Conrad. Johnny Nicholson introduced his guest, Mike Patterson, representing the local Thunderbird Car Club who attended to learn about the details of the Route 66 centennial.

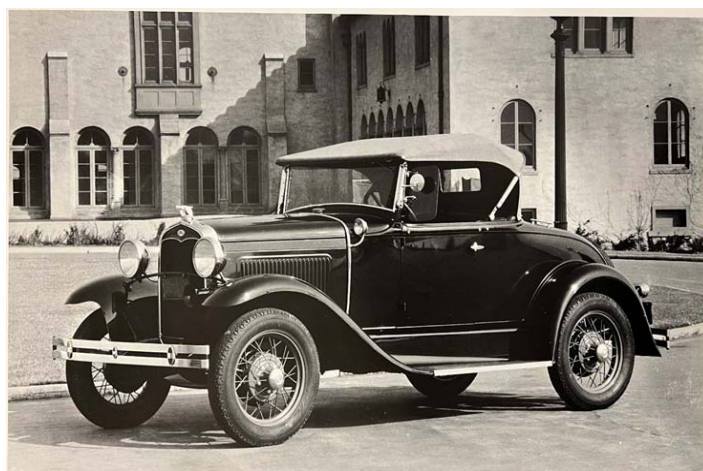
President Cail recognized Jackie Dunn's new welcome "hub" layout with plenty of room to sign in and sign up for upcoming events.

Mitchell DuVall recently purchased a 1931 Model A Victoria.

Ken Brust announced that the 1929 Town Sedan is still for sale for \$11,000.

President Cail solicited one more chili volunteer for the April Chili Supper meeting. President Cail then reviewed the multitude of upcoming activities and drives and directed everyone

Finer Points continued. . .



Does this mean none of the 1931 DeLuxe Roadsters came from the factory with side mounts and luggage racks? Of course not! The customer could elect to pay more for these items as accessories. Originally factory installed side mount brackets were riveted to the frame. Just to prove to you that I am not crazy, below is a factory photo contained within a mid-1931 brochure. As you can see, the car features a luggage rack which implies a driver's side mount as well. To confirm my suspicions, the brochure states "Bumper, Truck Rack, Fender Well Extra."



Regardless of spare tire placement or the presence of a luggage rack, it's hard to beat the sheer driving enjoyment a top-down Roadster can provide. Especially when it's 82 degrees and sunny like it was today.

to the Rumble Sheet for details.

Since the February meeting was cancelled due to inclement weather, Valentines Day gifts were distributed to the ladies a month late.

The meeting was adjourned by President Cail at 8:10 PM.

John Rinkenbaugh, Secretary.

SATURDAY DRIVE TO WOOLAROC & LUNCH AT BARTLESVILLE PAINTED HORSE BAR & GRILL

by John Rinkenbaugh



On Saturday, May 24th, our club plans to drive our Model A's to visit and tour Woolaroc Museum & Wildlife Preserve and then drive in to Bartlesville for lunch at the Painted Horse Bar & Grill.

We will meet at the Casey's General Store on E. Main St. / OK-20 in Collinsville for fuel and restrooms. We will depart at 9 AM and caravan west to Skiatook and then north toward Barnsdall and up to Woolaroc. That is a 35 mile drive so we should arrive by 10 AM. The discounted admission fee is \$16 per person; pay at the door.

Following our visit to Woolaroc, we will drive about 20 minutes up to Bartlesville for lunch at the Painted Horse Bar & Grill, order off the menu and pay ourselves as usual.

Following lunch we will return via Ochelata, Ramona and Vera to the Collinsville Casey's again for a rest stop before scattering home.

We will have a sign-up sheet at the upcoming meetings to have a good estimate for making reservations.



RUMBLE SHEET



BROKEN ARROW COMMUNITY THEATER AND DINNER APRIL 6, 2025

Performance: On Golden Pond

Date/Time: April 6 at 2p.m.

Cost: \$20 per person

Theater Address: 1800 S. Main St., Broken Arrow

Dinner: Rib Crib

Cutoff date is March 18 for purchase of tickets. Come join the fun of reminiscing about days gone by while we enjoy a performance of "On Golden Pond". Following the performance, we will have dinner at a Rib Crib, Main and 71st. Since we are going to a matinee, we encourage you to drive your Model A.

by Roy Cail



TULSA MODEL A FORD CLUB BREAKFAST APRIL 5, 2025, 8:30A.M. BIG BISCUIT RESTAURANT OWASSO

by Roy Cail

April breakfast will be at a new venue for us. We are going to the Big Biscuit restaurant located at 8529 North 129th East Ave, Owasso. Big Biscuit has a room at this location and one in Owasso that can accommodate our group.

Looking forward to having you join us for good food and great conversations.

APRIL 2025

PAGE 4

FUN TIME AT MARCH 1 BREAKFAST

by Ken Brust

Jackie had all the signup sheets arranged and helped get everyone squeezed into the nice private room while Tim was still outside in the parking lot trying to get his car problems fixed. All 30 of us managed to get settled in for a robust breakfast. We only had a single server which slowed things down a tad, but she was good and friendly. Big Biscuit serves big biscuits, big pancakes, big waffles and big servings! No one should have left hungry. Once Tim came in to join us, he gave a brief announcement about our drive around Mohawk Park. He passed around some nice information sheets of the history and maps of the park and said he used to live out there in his early years. But he confessed his efforts were of no avail in getting his car running on all 4 cylinders, so he and Linda would jump in with Marvin and Linda and lead the tour from there. Following our hefty breakfasts, Tim and Jackie drew for the \$10 prize which was won by Beverly Bornefeld.

The day was beautiful and perfect for a Model A drive. Only 7 of the many Model A Fords in the parking lot made the tour. Bob Stine was nice enough to drive Tim's Ford to Marvin's while his Linda followed him in their car and then Marvin and Linda drove Tim and Linda back to their house after the tour. (How many Lindas can a car club have???) Tim/Marvin led us north along Sheridan which is not the smoothest street in town nor the most scenic. This isn't a criticism, just fact. We needed to get north to circle the park. Lot's of people were enjoying the zoo and playing golf while many were hiking and others touring the Oxley Wildlife Exhibit. It is an enormous park but we only stayed on the paved roads.

A potty break was scheduled at the Oxley stop and we stopped again at the lake and purification facility while Tim explained how Tulsa eventually got its drinking water. It was a quite enjoyable day for a ride in our motorcars! Having drives planned following our monthly breakfasts as well as programs during our monthly meetings makes them all so much more worthwhile. Our board members are doing a fantastic job of keeping the enthusiasm for the Model A hobby at its peak.



Jackie Dunn presents speaker Rhys Martin a few tokens of appreciation for his presentation on Route 66 history and centennial celebration plans and for speaking about past restaurants in Tulsa.

Carolanne Mayan assisted Jackie Dunn to present Valentine gifts to the ladies. Thank you, Jackie, for the lovely mirror compacts and nail files!

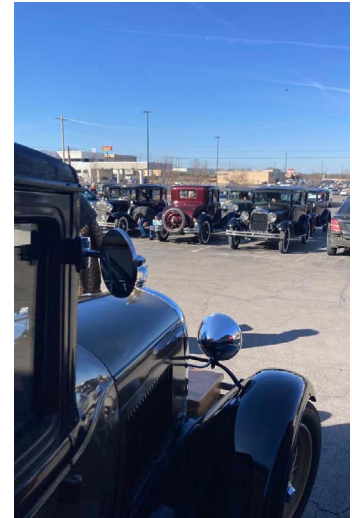




MONTHLY COFFEES

- Marvin's - 8:30 a.m.
▶ 1st Tuesday
- McDonald's - 8:30 a.m.
▶ 2nd, 3rd, & 4th Tuesday
- Bob Stine's - 8:30 a.m.
▶ 3rd Wednesday

March breakfast at Tulsa's Big Biscuit and drive around Mohawk Park area



Ladies Lunch will vary monthly based on who is scheduling the event. The person scheduling will communicate directly with participants.



*Thursday, April 17, 11:30 a.m.
Ti Amo Ristorante Italiano
6024 South Sheridan, Suite A,
Tulsa*



APRIL CALENDAR OF EVENTS

DATE	EVENT	LOCATION	TIME
April 5	Breakfast	Big Biscuit 8529 N 129th E. Ave, Owasso	8:30 a.m.
April 6	Broken Arrow Community Theater: Theater/Dinner Rib Crib	BA Community Theater 1800 S. Main St	2:00 p.m.
April 14	Board Meeting	Hardesty Library	1:00 p.m.
April 15	Monthly Meeting: Chili Dinner	Hardesty Library	6:30 p.m.
April 18 – 19	Tulsa Swap Meet	Creek County Fair Grounds	
April 24 – 27	Spring Tour	Ponca City and Local Area	



ERIC WENINGER
OWNER

THE MODEL A MEDIC 

2045 S BEDFORD ST
WICHITA, KS 67207

316-619-1821 CELL
316-685-2563 SHOP

STOCKING & FULL LINE OF
NEW AND USED MODEL A FORD PARTS

SPECIALIZING IN FULL SERVICE REPAIRS,
BRAKES, ENGINE TUNING, AND RESTORATION

www.modelamedic.com
modelamedic@jshcglobal.net

We've Revolutionized the way you find Model A Parts!

FOUR CATALOGS TO CHOOSE FROM:
• Coupe • Pickup • Open Car • Sedan

CALL & ORDER YOUR FREE CATALOG TODAY

1-888-879-6453

www.mikes-afordable.com

YOUR MOST RELIABLE SOURCE OF QUALITY PARTS FOR CARS & TRUCKS



SUNSHINE Report by **Connie Hudson**

Nothing but sunshine to report!

Please call Connie Hudson at 918-269-7240 or text me if you or someone you know who is ill or injured. Stay safe.



April 15 – Tory Brust & Linda Ochs

May 20 – Jeanne Washburn & Linda Stine

June 17 – Melody DuVall & Jackie Dunn

July 15 – Connie Hudson & Beverly Bornefield

August 19– Linda Bodine & Teresa DeCamp

September 16 – Connie Hudson & Jeanne Washburn

October 21 – Barbara Cail & Linda Mellage

November 18 - Linda Bodine & Virginia Harris

CLUB JACKETS, HATS AND MORE

If you are interested in purchasing clothing items with the Club Logo, contact

Kent Washburn
918-693-8504 or
kentwashburn@gmail.com



Birthdays & Anniversaries

- 1 Mel Burton
- 5 Kendall & Kim SUTTER
- 6 John Rinkengaugh
- 11 Carol Hayes
- 11 Robert Parker
- 13 Karen Dusenbery
- 14 Johnny Nicholson
- 15 Chris & Julianna DuVALL
- 15 Rus & Sandy SHULER
- 15 Chuck Mahan
- 19 John & Sharon LARIMORE
- 20 Gary & Ricki SULLIVAN
- 27 Jan Hamm
- 30 Susan Henderson

Three Notable April Fool's Jokes:

The most effective April Fool's jokes have come from some kind of authoritative source, such as a respected news channel or a local government. The joke must be false but believable and – most importantly – it must be harmless or inconsequential.

- The first story deals with Big Ben, the Great Clock of Westminster in London, England. It was on April Fools' Day back in 1980 that the BBC announced a big change. Big Ben's clock face was being changed to digital, and the first person to get back to the network could win the clock hands.
- My second story deals with former President Richard Nixon, who resigned from office back in 1974, Yet in 1992, National Public Radio ran a spot with Nixon saying that he was running for president again. It was very convincing, but it was not Nixon, only an actor. It was a very effective prank.
- More recently, there was an April Fools' Day announcement by the Boston Public Garden with a warning for people not to use their cell phones to take photos of the well-known sculptures in the garden because the light emitted would damage and erode the sculptures. It was just right – very strange but kind of believable.

taken from Rutger's Today

2025 CALENDAR

May 3	Breakfast and Miniature Golf	Silver Skillet - 8228 E 61st St., Tulsa	8:30 a
May 8	Board Meeting	Hardesty Library	1:00-3:00 p
May 20	Monthly Meeting Dan Threlkeld, Master Garden	Hardesty Library	7:00 p
May 24	Tour and Lunch	Woolaroc & Painted Horse, Bartlesville	TBD
June 7	Breakfast and Drive to Chelsea	Eggbert's 900 S. Lynn Blvd. Claremore	8:30 a
June 17	Monthly Meeting: Audrey Martin Preservation Cherokee Basket & Barbara Cail Sweet Grass Basket Art	Hardesty Library	7:00 p
June 21	Tour and Lunch	Pensacola Dam and Crosby's Catfish	TBD
July 3	Concert: 4 th on the 3 rd Patriotic/Dinner	TCC, 81 st at Hwy 169	TBA
July 5	Breakfast		TBD
July 15	Monthly Meeting/Sea to Sea Model T, Mike Bender	Hardesty Library	7:00 p
July 19	River City Players Concert & Lunch	Tahlequah	11:00 a
August 2	Breakfast		TBD
August 16	Ice Cream Social/Lunch/Member meeting	Joanna Cooper's	11:00 a
August 19	NO MEETING – WILL BE COMBINED WITH ICE CREAM SOCIAL		
September 6	Breakfast		TBD
September/TBD	International Model A Day and Tour in Tulsa	Bill Knight Ford	TBD
September 16	Monthly Meeting: Kim Sutter Grandmother's A Trip to West Coast	Hardesty Library	7:00 p
September/TBD	Play Day		TBS
October 4	Breakfast Michael Wallis Book Review	TBD Sophian Plaza, Tulsa	8:30 a 11:00 a
October 7-10	Hershey Swap Meet	Hershey, PA	
October/TBD	OSU-Okmulgee Grand Buffet	Okmulgee	TPD
October 21	Monthly Meeting: Baked Potato Dinner	Hardesty Library	6:30 p
October	TBD	Fall Tour	TBD
November 1	Breakfast	TBD	TBD
November 11	Veteran's Day Parade	Claremore	TBD
November 18	Monthly Meeting: Shoe Box Swap Meet	Hardesty Library	7:00 p
December 6	Breakfast	TBD	
December	NO MONTHLY MEETING		
December 13	Christmas Party	Country Cottage	1:00-3:00 p



Rachel's Kitchen







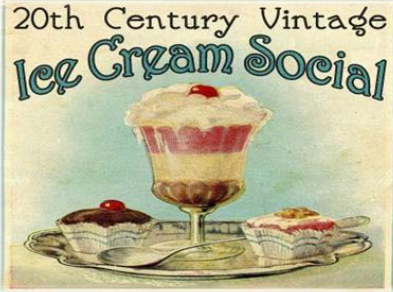







for an Amish lunch





2025 MONTHLY MEETINGS: SCHEDULE UPDATED 2/19/25

FEBRUARY	MARCH	APRIL
<p>Guest Speaker: Mike Bender, Sea to Sea in a T Valentine's Table with gifts for Ladies VALENTINE BACKDROP FOR PHOTOS</p>  <div style="border: 2px solid red; padding: 5px; color: red; text-align: center; font-weight: bold;"> CANCELLED DUE TO WEATHER </div>	<p>Guest Speaker: Rhys Martin, President - Oklahoma Route 66 Association Display Table: Route 66 Centennial</p> 	<p>Meeting Starts at 6:30 p.m. instead of 7 p.m. Display Table: 1928 memorabilia. Tulsa Auto Show (tentatively scheduled Apr 2025)</p> 
MAY	JUNE	JULY
<p>Guest Speaker: Dan Threlkeld Display Table: 1929 memorabilia</p> 	<p>Guest Speakers: Preservation of Cherokee Heritage of Basket Weaving by Audrey Martin and East Coast Baskets by Barbara Cail</p> 	<p>Guest Speaker: Mike Bender, Sea to Sea in a T (re-scheduled due to cancellation of Feb 2025 Mtg)</p> 
AUGUST	SEPTEMBER	OCTOBER
<p>20th Century Vintage Ice Cream Social</p>  <p>Good Eats & Ice Cream! Saturday, August 16, 11:00 a.m.</p>	<p>Guest Speaker: Kim Sutter, Grandmother's Model A Trip Part II</p> 	 <p>Display Table: 1930 memorabilia</p>
NOVEMBER	DECEMBER	2026
<p>SHOEBOX SWAPMEET</p>  <p>Display Table: 1931 memorabilia</p>	<p>Christmas Party Country Cottage Restaurant Locust Grove</p> 	 <p>HAPPY NEW YEAR!</p>

2025 Officers & Board Members

President Roy Cail

rcail102244@gmail.com

918-906-0575

Vice President Tim Bodine

tbodine170@gmail.com

918-864-1804

Secretary John Rinkenbaugh

jrink77@outlook.com

918-978-3935

Treasurer Jackie Dunn

adunn1944@outlook.com

918-960-4919

Board Member Linda Ochs

hotdog263@cox.net

918-688-3707

The World's Largest Selection of 1909-31 Ford Parts

Snyder's

ANTIQUe AUTO PARTS

12925 Woodworth Rd. • New Springfield, OH 44443

Toll Free Ordering (888) 262-5712
or FAX (888) 262-5713

Order On-Line @ www.snydersantiqueauto.com

  **FREE Fully Illustrated CATALOG**
\$10.00 outside the U.S., Canada, & Mexico

COMMITTEE CHAIRPERSONS

Advertising

Jeanne Washburn - 918.693.2912

jmwashburn4129@gmail.com

Breakfast and Breakfast

Drives/Activities

Linda Ochs

hotdog263@cox.net

918-688-3707

Clothing

Kent Washburn - 918.693.8504

kentwashburn@gmail.com

Club Directory

Steve Reiser - 918.851.8634

stevereiser@hotmail.com

Cookies

Jeanne Washburn

jmwashburn4129@gmail.com

918-693-2912

Finer Points

Chris DuVall - 918.816.0839

chrisduvall@gmail.com

RUMBLE SHEET

Membership

Jackie Dunn - 918-960-4919

adunn1944@outlook.com

Mileage Awards

Roy Cail - 918.906.0575

rcail102244@gmail.com

Name Tags

Linda Ochs - 918.688.3707

hotdog263@cox.net

Newsletter Coordinator

Pam Lundy - 918-850-9682

pianopam@aol.com

Back Up News Letter

Roy Cail - 918-906-0575

rcail102244@gmail.com

Photography

Barbara Cail - 918.645.3981

bcail52345@gmail.com

Photo Assistant

Ken Brust - 918-728-1900

kennethebrust@gmail.com

Meeting/Programs

Jackie Dunn - 918.960.4949

adunn1944@outlook.com

Refreshments

Vacant

Sunshine

Connie Hudson - 918.269.7240

connie.hudson58@icloud.com

Supplies

Marvin & Linda Mellage

918.629.2978

lindamellage@cox.net

Tours and Activities

Tim Bodine - 918.864.1804

tbodine170@gmail.com

Web Site

Steve Reiser - 918.851.8634

stevereiser@hotmail.com

About the Tulsa Model A Ford Club

Chapter #8231 of the Model A Club of America (MAFCA)

This is the official publication of the Tulsa Chapter of Model A Ford Club of America. This monthly newsletter is mailed to members, prospective members, advertisers and editors of similar publications. It's purpose is to keep you informed of what has taken place, scheduled activities and to promote fellowship among club members.

Members are encouraged to submit articles containing technical or any club related information. Articles must reach the editor by the 5th of the month to insure publication in that month's newsletter. Articles received after that will appear in a following newsletter.

Membership dues for the Tulsa Model A Ford Club are \$30 per family annually payable at the end of the year. Contact the New Member chairperson for new memberships and the Treasurer for renewals. The Tulsa Model A Ford Club recommends membership in the national MAFCA organization.

Members may advertise at no cost, non-business ads in the newsletter For Sale, Wanted or Trade section. Businesses may advertise with cost by the ad size, (business card size or 1/4 page) in the advertising section. The number of ads are restricted to space available in the Rumble Sheet. Contact the Advertising chairperson for details.

Meeting Schedule

- Business Meeting - 7:00 p.m., 3rd Tuesday of each month at Charles Hardesty Library, 8316 East 93rd Street, Tulsa
- Breakfast - 8:30 a.m., 1st Saturday of each month, location to be announced

TO SUBMIT AN ARTICLE, LETTER, OR FOR SALE OR TRADE, EMAIL:

Pam Lundy - pianopam@aol.com

The Rumble Sheet

Tulsa Model A Ford Club
P.O. Box 33348
Tulsa, OK 74153-3348

