

THE RUMBLE SHEET

OCTOBER 2024 - VOLUME 58 - ISSUE 10

- 2 *Finer Points*
- 3 *Nuts & Bolts*
Mens' Coffee
- 4 *OSU Okmulgee*
Buffet Event,
Meeting Minutes
- 5 *International Model*
A Day Pix
- 6 *Calendar*
- 7 *Sunshine Report,*
Birthdays
and Anniversaries,
Merchandise, Cars
for Sale, New
Members
- 8 *September*
Meeting Pix
- 9 *International Model*
A Pix
- 10 *September Breakfast*
Pix, Model A Story
- 11 *Officers, Board,*
Committee Chairs
- 12 *About the Model A*
Club

Fall is rushing down on us once again, and I know this because the water in our pool is already too cold for us to swim. I just came from our celebration of National Model A Day. Mr. Bill Knight was most gracious in helping us to recognize and show off our A's in front of his Ford Dealership. I love seeing them parked next to the new cars. It was a beautiful day for a drive, and of course a fun little trip along old Route 66. The only down side was TU lost. At The September General Meeting, we placed in nomination the names of two of our club members to serve on The Board of Directors for this coming calendar year, Mrs. Jackie Dunn, and Mr. John Rinkenbaugh. We also asked for any additional nominations from the floor. The nominations will be voted on at the October meeting. This year, Kent Washburn and Sam Slavens will be finishing their terms as board members.



The Fall Tour is on and scheduled for October 17th through October 20th. Thursday Oct 17th is a travel day to Van Buren, Arkansas and our hotel, The Holiday Inn Express, Van Buren. We will be stopping outside of Sallisaw, after lunch, and along the way to tour the Sequoyah's Cabin. In Fort Smith, we have arranged to include The US Marshalls Museum, Miss Laura's Social Club, The National Historic Site, and in Van Buren The Van Buren to Winslow Scenic Train Excursion. There are several other tour options that are available, but not scheduled. Please make your reservations as soon as possible. The cut-off date is October 1, 2024 for reservations. I will need to report final numbers for each of these events. Be safe as we look forward to enjoying this time out on the back roads and this time together.

Kent



THE FINER POINTS

by Chris DuVall

September always seems to be a busy month! It's hard to believe it's coming to a close again. I'm looking forward to Model "A" Days at the Gilmore Museum

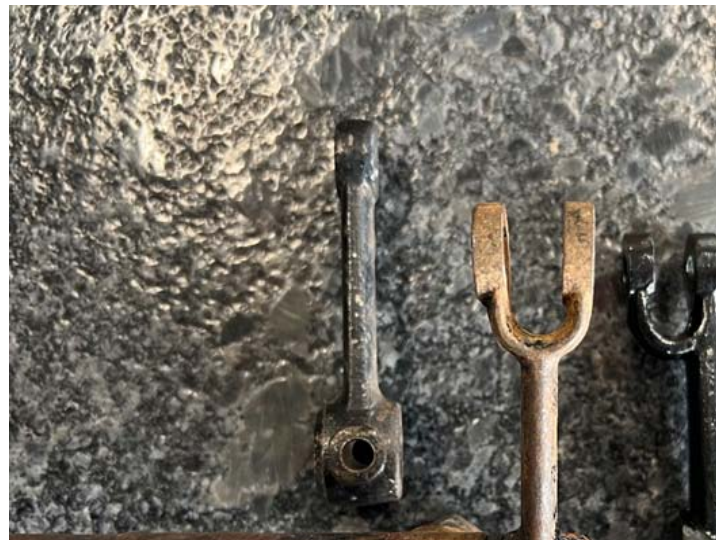
again. Wish me luck that I find lots of goodies! This year, I was roped into giving a presentation on how to plate Model "A" parts. So, if you're planning to come be sure to attend my seminar. Julianna and I were also able to chauffeur her niece

and nephews around in the 1929 Phaeton. Ford did consider this car to be a seven-passenger car, right? Needless to say, all the kids loved riding around in the Model "A". It's important to share the experience when possible. How else can we create new fans of these wonderful automobiles?

The trip with Julianna's family was fun, but it was also filled with hills. No, not just hills... steep hills! The hill going down to the house was definitely a hill that should be taken in first gear only. Of course, this was a good workout for the newly restored brakes on my Phaeton, and they performed admirably! The mechanical brakes on a Model "A" Ford can work really well. However, brakes on these cars are definitely a "sum of the parts" system. What I mean is each part has to be up to par for the brakes to work properly. Installing new shoes does not constitute a rebuilt braking system. Since I judge brakes at the national meets, I'll go more in depth into what to look for in brakes in future articles.

The brakes section in the Restoration Guidelines and Judging Standards outlines three different front brake levers that were used on the Model "A". Below is a photo of the three styles. The first style on the left had a single eye and was used from beginning of production through June of 1928 with the early brake system. From

July of 1928 through December of 1929, the second style was used: straight with two eyes. Last, the offset style was used from January 1930 through the end of production. These levers were dipped in black enamel prior to assembly.



These parts are highly visible when judging the braking system. However, if you are more interested in driving your car rather than judging, I would suggest the offset design. The reason Ford changed to this design was because it moved the brake rod further away from the shock absorber. Occasionally, the brake rod can be bent by hitting the shock arm which shortens the overall length of the brake rod and results in the brake being activated. Anyway, wish me luck at Model "A" Days in my everlasting search for parts. Hope to see you there!

Nuts & Bolts



by Ken Brust

Congrats to Sam. He has now added a tudor to his Model A collection and is in the process of building another building for his family of cars and trucks. Well Done, Sam!

.....I was asked to help with a wedding recently and chauffeured the bride and groom from Southern Hills at midnight following the reception over to the Mayo Hotel. I was provided a nice donation for our Club from the proud father of the bride which I have passed on to Kent to help with expenses for the Fall Tour..... I hear we have over 30 Model As signed up for the Arkansas tour thus far. One of them belongs to our longtime friend and current MAFCA President, Robert Bullard, and his bride, Elaine. It is always fun to have the Bullards back among us. I also see where the "Holdenville Foursome" have signed up. It will be lots of fun to see some folks we don't get to see very often.....Have you been following Kim on her trip to trace her grandmother's Model A travels years ago? She seems to be having a delightful time and she really enjoyed the Gilmore Museums. Tim and Linda are also on the road with plans to visit the Gilmore Museums and the Henry Ford Museum. I'm sure they all will have lots of stories to tell following their adventures.....Still going through many old Restorer Magazines and I read where Phil Nethercot in the early 1980s was instrumental in organizing a Pony Express reenactment with Model As following the original route from St. Joseph, Missouri to Sacramento, California. Many of us remember Phil as a Tulsa club member. He is mostly remembered for restoring two beautiful 1931 slant Town Sedans. Rodger and Debbie still drive one of these two restorations while the other one was owned by Merv Snowden until his death. That car is now down in Florida but was showcased in an article recently in the WSJ and was recognized by Jerry Conrad.....I recently toured the fabulous Corvette collection in Sapulpa at the Paragon Pipe Company but was not allowed to take pictures. To best describe

the overall place would be to imagine Joanna Cooper's wonderful collection and 50's diner but on a huge dose of steroids! Absolutely incredible. Mostly all various years of Corvettes but no prewar cars. But an amazing place to see.....John Bornefeld recently came to the aid of a young couple driving a Model A from California to Michigan who had tire trouble. The young man posted on Facebook about his predicament and was able to get a couple of used tires which had serious cracks in them while out in the Texas panhandle. John told him he had a new one so he later stopped in Tulsa and John fixed him up. William Smith was with his girl friend towing a small trailer. They were camping out and showering in different Planet Fitness centers where they had memberships. John offered to put them up but they were anxious to get back on the road. They wanted to make Gilmore Museums by Model A Day! William told John that the further east they came, the friendlier the folks were. Well Done, John! I am sure the DuValls all met William and his girl friend at the Gilmore event.....John and Sharon Lairmore were at our gathering at Bill Knight Ford. It was nice to catch up with them again. I believe Bill truly enjoys his association with our Model A Club and we enjoy his support. He told me he just acquired the Ford dealership in Bartlesville. I suggested we come up and help him with his grand opening and he thought it a nice idea. Stay tuned. Thanks to Roy and Barbara for coordinating the Route 66 drive and photos.....Congratulations to Lonnie Sherry for winning Best Car Voted by the Judges at the Supulpa Route 66 Car Show. He's got a very sharp little coupe..... Happy Halloween to all and many Happy Trails to You!

Happy trails to all.

**Marvin's
October 1, 8:00**

**No Coffee at
Stines**



OKLAHOMA STATE
UNIVERSITY
(OKMULGEE)
GRAND BUFFET
THURSDAY, OCTOBER 10



**MEETING
MINUTES**

This was held at Hardesty library in support of the September monthly

general meeting. It was called to order at 7:30 pm by President Kent Washburn. Don Reed returned thanks prior to the meal being served for the baked potato dinner.

The Treasurer's Report, was given by Jeanne Washburn. Motion to accept was made by Jerry Conrad and a second by Marvin Mellage. It passed unanimously.

The Secretary's Report is published in The Rumble Sheet and was accepted with no concerns or objections.

Ken Brust gave the Sunshine Report.

Old Business:

Roy Cail gave a report on International Model A Day and the great turnout that we had.

Kent Washburn placed in nomination two names for next year's board of directors. They are Mrs. Jackie Dunn and Mr. John Rinkenbaugh. He asked for nominations from the floor and there were not any presented.

New Business:

- October 5th – Monthly breakfast at the Silver Skillet – Mr. Bob Stine
- October 10th – OSU Grand Buffet at Okmulgee – Roy Cail confirmed 30 tickets reserved
- No General Meeting in October due to the Fall Tour
- October 17th thru October 20th – Fall Tour Fort Smith & Van Buren – Kent Washburn
- November 2nd – Monthly breakfast, to be announced
- November 11th – Veterans Day Parade Claremore, OK – Kent Washburn
- November 19 – General Meeting Hardesty – Chili Dinner – Voting on the new Board members
- December 11th – Board Meeting Hardesty Library
- December 14th – Christmas Party – Country Inn – Locust Grove
- December 11-14th – MAFCA National Awards Banquet – Salt Lake City
- Spring Tour 2025 - 50-50 – We two winners, Don Red and Linda Ochs

Close out Meeting - Motion to adjourn the Meeting – Jerry Conrad – Second Andy Dunn

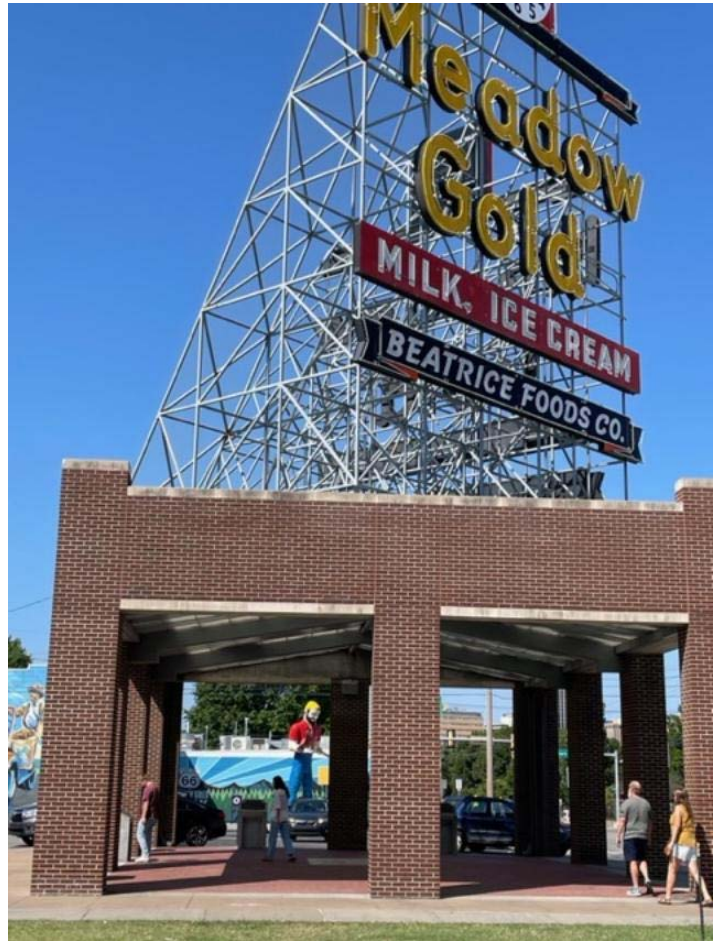
Tim Bodine - Sec

We will be caravanning to OSU – Okmulgee for the Culinary Art's Grand Buffet on Thursday, October 10. Normally the grand buffet for this semester is held in November with Thanksgiving as the theme. However, this year they moved it forward to October. I do not know the theme but am sure it will be delicious as usual.

1. We will depart from Southerland's parking lot at South Memorial and 151st at 10:15 a.m.
2. Reservations for dining are 11:15 a.m.
3. Cost is \$15 per person.
4. Number of reservations being held is: 30 We have been able to increase our reservations for all those who signed up. However, we will not be able to expand the number any further.

Looking forward to another fun day in our A's. We will go sun or rain as they will be counting on us fulfilling our reservations. If raining, you may want to drive your modern car but is up to each individual.





Calendar of August Events

October 1 - 5

1/Tuesday, 8:00 a.m.
Men's Coffee at Marvin's

5/Saturday, 8:30 a.m.
Model A Breakfast
Silver Skillet

October 6 - 12

NO COFFEE AT BOB STINE'S THIS WEEK

10/Thursday, 11:15 a.m.
OSU Grand Buffet - Okmulgee
\$15 per person

October 13 - 19

17/Thursday
Fall Tour, Fort Smith/Van Buren, AR

October 20 - 31

NO EVENTS PLANNED



NOVEMBER

- 2 - Breakfast, TBA
- 5 - Men's Coffee at Marvin's
- 11 - Veteran's Day Parade, Claremore
- 13 - Board Meeting, Hardesty Library
- 19 - General Meeting, Hardesty, Chili Dinner, Board Member Voting
- 20 - Men's Coffee at Bob Stine's

DECEMBER

- 3 - Men's Coffee at Marvin's
- 7 - Breakfast, Pending
- 11 - Model A Board Meeting, Hardesty Library
- 14 - Christmas Party, Country Inn, Locust Grove

Detail Tool & Machine



Wire EDM Specialist
Tooling & Job Shop Work
Conventional and CNC Machining

Dave Pilmaier (918) 697-2589 cell
detailtool@fairpoint.net (918) 476-9476 fax

ERIC WENINGER
OWNER

2645 S BEDFORD ST
WICHITA, KS 67207

316-619-1821 CELL
316-685-2563 SHOP

www.modelamedic.com
modelamedic@jshcglobal.net

THE
MODEL A
MEDIC



STOCKING A FULL LINE OF
NEW AND USED MODEL A FORD PARTS
SPECIALIZING IN FULL SERVICE REPAIRS,
DINING, ENGINE TUNING, AND RESTORATION

Well, the Ramsey family had a trifecta recently with hospital visits. Lisa went in for a heart procedure and seems to be doing fine now. We are excited to hear that she and Chuck plan to go on the Fall Tour! Samantha underwent a knee procedure and is doing well while Cici broke a bone in her foot but is back going strong again. Sorry to hear of these incidents but glad all are recovering nicely. John Bornefeld said Beverly is on the mend again while he is going to PT twice a week to strengthen his new hip.

I had a note from Rus who said he doesn't walk much anymore but can scoot around just about anywhere in his senior center fairly well in his wheelchair. I asked him to call me before he ever tried the stairs!! Our caring thoughts are with Rus and all of our other members undergoing various medical treatments. We wish you the very best.

Text/Call me at 918-728-1900.

Stay safe!



BIRTHDAYS & ANNIVERSARIES

- 1 Gary Sullivan
- 3 Joanna Cooper
- 5 Linda Ochs
- 7 Chuck & Karen DUSENBERY
- 10 Kelly Sherry
- 11 Carolanne Mahan
- 17 Linda Bodine
- 20 Don Reed
- 22 Roy Cail
- 23 Ron Cherry
- 23 Marvin & Linda MELLAGE
- 30 Wanda Steffens
- 31 J. Paul Gordon & Steve McCURLEY



MODEL A'S FOR SALE: 1930 Ford Model A Roadster Deluxe \$16,000 firm Tim Bodine 918-864-1804

MODEL A'S FOR SALE: 1931 coupe \$12,000, 1928 Sport Coupe \$12,000 & 1931 wide bed Pickup \$16,000 Mel Burton 918-281-9443



Ron and Susan Cherry
 1719 Chestnut Ridge Rd
 Kingwood, TX 77339
 832-392-4653
 ron.cherry2@gmail.com
 1930 Fordor



CLUB JACKETS, HATS AND MORE

If you are interested in purchasing clothing items with the Club Logo, contact

Kent Washburn
 918-693-8504 or
 klwashburn@cox.net



September

Meeting
w/ baked potato



We've Revolutionized the way you find Model A Parts!

FOUR CATALOGS TO CHOOSE FROM:
 • Coupe • Pickup • Open Car • Sedan

CALL & ORDER YOUR FREE CATALOG TODAY

1-888-879-6453

www.mikes-afordable.com

YOUR MOST RELIABLE SOURCE OF QUALITY PARTS FOR CARS & TRUCKS

 Four catalogs are shown, each with a different cover image of a Model A car. The covers are blue and red with a yellow sun. The text on the covers is partially visible.

-----INTERNATIONAL MODEL A DAY-----





taken from:
FAVORITE MODEL A STORIES
FROM THE FORD BARN,
AUSTIN, TX

My story took place in the 1930's when a pal and I each paid \$5 and bought a 1930 Coupe from a junkyard about 20 miles from home. Delivery 20 miles cost fifty cents. It was a good running car and the rear deck had been removed and a homemade box body installed in its place. We were both 12 years old and our small town had ocean beaches and lots of pine woods. One day with tires deflated a bit we were riding the dunes high above the ocean beach below when we got stuck in the soft sand. With the rear tires spinning slowly in the soft sand, hand throttle giving the gas, both of us were out back pushing. As the car moved forward slowly the rear tires suddenly got a grip when they hit some clay. The car took off heading towards a 60 foot drop to the ocean beach below. I had been the driver and was pushing on the left rear side. I was able to scramble into the box body. over the side onto the running board, then open the door and jump in. I stopped the car on the edge of the drop to the beach.



Another brief story took place in 1942 just before gas rationing began and when the sale of new tires had been suspended. I had another 1930 Coupe by then and its tires were threadbare. I had been in Boston, 120 miles from home and had used my spare tire on the trip to the city a week earlier. Friday night around midnight I was about halfway home when the left rear tire blew out. As I had no spare I removed the flat tire and its tube and drove home on the rim. Passing thru the various villages I could see curtains going up and folks looking out to see what was causing the racket. Actually the wheel suffered very little damage from about 60 miles on the rim. I still am driving that 1930 Coupe and you bet it has good tires now.



2024 Officers & Board Members

President/Treasurer Kent Washburn
klwashburn@cox.net
918.693.8504

Vice President Roy Cail
rcail102244@gmail.com
918-906-0575

Secretary Tim Bodine
tbodine170@gmail.com
918.864.1804

Board Member Bob Stine
bobstine@sbcglobal.net
918.829.6555

Board Member Sam Slavens
samslavens918@gmail.com
918.986.6612

The World's Largest Selection of 1909-31 Ford Parts

Snyder's

ANTIQUE AUTO PARTS

12925 Woodworth Rd. • New Springfield, OH 44443

Toll Free Ordering (888) 262-5712
or FAX (888) 262-5713

Order On-Line @ www.snydersantiqueauto.com

 **FREE Fully Illustrated CATALOG**
\$10.00 outside the U.S., Canada, & Mexico

COMMITTEE CHAIRPERSONS

Accounting

Jeanne Washburn - 918.693.2912
jeannewashburn@cox.net

Advertising

Tim Bodine
tbodine170@gmail.com
918.864.1804

Clothing

Kent Washburn - 918.693.8504
klwashburn@cox.net

Club Directory

Steve Reiser - 918.851.8634
stevereiser@hotmail.com

Cookies

Beverly Bornefeld - 918.261.9538
bab9844@gmail.com

Finer Points

Chris DuVall - 918.816.0839
chrisdduvall@gmail.com

Membership

Jeanne Washburn - 918.693.2912
jeannewashburn@cox.net

Mileage Awards

Roy Cail - 918.906.0575
roycail@cox.net

Name Tags

Linda Ochs - 918.688.3707
hotdog263@cox.net

Newsletter Coordinator

Harold Helton - 918.230.4906
hahelton@cox.net

Nuts & Bolts

Ken Brust - 918.728.1900
kennethebrust@gmail.com

Photography

Barbara Cail - 918.645.3981
barbcailhome@cox.net

Photo Assistant

Ken Brust (see above)

Programs - Board

PR/Marketing

Rodger Johnson - 918.629.6177
leperone34@aol.com

Refreshments

Bob Stine - 918.261.2238
bobstine@sbcglobal.net

Sunshine

Ken Brust - 918.728.1900
kennethebrust@gmail.com

Supplies

Marvin & Linda Melage
918.629.2978
lindamelage@cox.net

Tours

Board

Web Site

Steve Reiser - 918.851.8634
stevereiser@hotmail.com

About the Tulsa Model A Ford Club

Chapter #8231 of the Model A Club of America (MAFCA)

This is the official publication of the Tulsa Chapter of Model A Ford Club of America. This monthly newsletter is mailed to members, prospective members, advertisers and editors of similar publications. It's purpose is to keep you informed of what has taken place, scheduled activities and to promote fellowship among club members.

Members are encouraged to submit articles containing technical or any club related information. Articles must reach the editor by the 5th of the month to insure publication in that month's newsletter. Articles received after that will appear in a following newsletter.

Membership dues for the Tulsa Model A Ford Club are \$30 per family annually payable at the end of the year. Contact the New Member chairperson for new memberships and the Treasurer for renewals. The Tulsa Model A Ford Club recommends membership in the national MAFCA organization.

Members may advertise at no cost, non-business ads in the newsletter For Sale, Wanted or Trade section. Businesses may advertise with cost by the ad size, (business card size or 1/4 page) in the advertising section. The number of ads are restricted to space available in the Rumble Sheet. Contact the Advertising chairperson for details.

Meeting Schedule

- Business Meeting - 7:00 p.m., 3rd Tuesday of each month at Charles Hardesty Library, 8316 East 93rd Street, Tulsa
- Breakfast - 8:30 a.m., 1st Saturday of each month, location to be announced
- Board Meeting - 7:00 p.m., 1st Tuesday of each month, Charles Hardesty Library, 8316 East 93rd Street, Tulsa

TO SUBMIT AN ARTICLE, LETTER, OR FOR SALE OR TRADE, EMAIL:

Harold Helton - hahelton@cox.net

The Rumble Sheet

Tulsa Model A Ford Club
P.O. Box 33348
Tulsa, OK 74153-3348

