



# The Rumble Sheet

June 2011

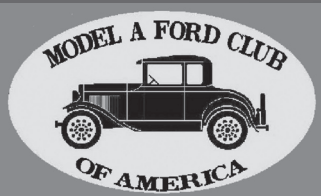
Volume 45

Issue 6

Inside this Issue

- 1 President's Message
- 2 June/July Updates, Midwest Regional Meeting Pre-planning Meeting
- 3 4th on the 3rd
- 4 Tinkerbell Story, Cookie List
- 5 Technical Tips, Nuts & Bolts
- 6 Birthdays, Anniversaries
- 7 Accessory Price List For Sale, Wanted, Calling Committee, New Members
- 8 Officers, Board Members, Committees, July Breakfast
- 9 Breakfast Pics
- 10 Calendar
- 11 About the Model A Club

visit us on the web at  
[www.tulsamodela-fordclub.com](http://www.tulsamodela-fordclub.com)



## President's Message



Spring has come and it sure feels good. Green grass, trees leafing out and flowers blooming, and of course driving our Model A's. It sure feels good. I enjoy the parades we have in this country. We live in Middle America at its best.

We are so fortunate to live in a country where we have the freedom to have parades that are not government organized. We have parades filled with various school marching bands from the area, floats from civic organizations, religious organizations expressing our faith in GOD. Boy Scouts and Girl Scouts and various other groups, right down to a little kid pulling a little red wagon with his dog in it. Then we have the military marching by reminding us someone is still on guard protecting our freedom. Next are the local politicians expressing our freedom to vote to select our leaders. It makes you proud to be an American. We owe so much to those who gave their lives for our freedom. As we honor them on this Memorial Day, let us not ever forget them.

What makes us car people's blood pump is cars of all kinds. They represent America's ability to innovate and mass produce. Thanks to Henry Ford and the assembly line, which gave the masses mobility? Of all the late model shiny high horse power cars, Model A's are still taking the show. The people love to see Model A's. It must be something so many people can relate to from their past.

Well we have a busy summer coming up, so check the "Rumble Sheet" to keep up. Be thinking about the 2014 Regional Meet we will be hosting in Tulsa. The next brainstorming session will be June 28, at 6:30 at the Catoosa School Board Room. See you there.

LET THE FORD BE WITH YOU  
DON REED

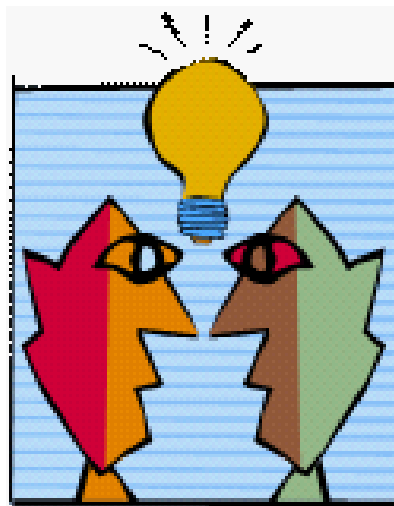
# June/July Event Updates

- June 5 – 10 - Regional Meeting, Kansas City/Overland Park, KS We have members planning to caravan from Tulsa driving their Model A's. Others are hauling their Model A's. We have about 12 members registered to attend.
- June 16 - 19 - Texas Tour, Conroe TX. If you are considering attending, contact Marvin or Linda Mellage for additional information.
- June 21 - Monthly Meeting - Lewis and Clark - 7 p.m.
- July 2 - Breakfast/Owasso - Delta Cafe - 8 a.m.; visit to Tulsa Air and Space Museum following breakfast. 10a.m.
- July 3 - 4th on the 3rd Patriotic Concert, 7:30 p.m. This concert will be held again this year at the PAC center on the TCC campus at 81st and HWY 169. Cost per ticket is \$12 and is due by June 21 monthly meeting. Tickets will be purchased the following day and distributed night of concert. Contact Barbara Cail at barbcail@cox.net or 918-299-5691 or sign up and pay at meeting. Last year we had about a dozen members and guests attend. Those attending expressed a great appreciation for the event and felt it should be on our calendar again this year. What a great Patriotic evening of music it was! Optional dinner will be planned.
- July 16 - Porter Peach Parade and Lunch - Porter - TBA; Line up is usually about 10a.m.
- July 19 - Monthly Meeting/Ice Cream Social will be held at Lewis and Clark School, Tulsa, at 7 p.m. This is always a fun and popular summertime treat. Volunteers are needed to make homemade ice cream or to furnish purchased ice cream. Contact Don Reed to be put on sign-up sheet to volunteer to make or bring ice cream for our ice cream social.
- July 23 - "The Drunkard" performance in Tulsa; TBA
- August 6 - Breakfast - TBA; 8 a.m. After breakfast visit a private car collection along with an antique airplane collection in Broken Arrow

## FINAL 2014 MIDWEST REGIONAL MEETING PRE-PLANNING MEETING by Roy Cail

Our next and final pre-planning meeting is scheduled for June 28, Catoosa School Admin building (2000 South Cherokee, Catoosa), Board Room at 6:30PM. We encourage any member that is interested in the 2014 Regional Meet to attend this meeting where we will finalize the "brainstorming" portion of the planning process. The primary focus of discussion at this meeting will be pertaining to organizational structure. We value all input and appreciate the participation of our members.

We will be looking for many volunteers (including Chair of the event and a number of Committee Leaders) to assist in hosting this fun event. We would encourage each of you to consider what role you would enjoy doing to make this Meet a success. Once this meeting has been completed we will



be publishing the results of our "brainstorming" and discussions meetings so all members can see the decisions that have been made and the general direction of the Regional Meet.

Remember, at the Regional Meet in Iowa in 2012 Tulsa will have to present an overview of

what our Meet will be doing in 2014. This starts the marketing effort to attract mid west Model A Clubs to attend our Meet. In 2013 in Wichita Kansas Tulsa will have to present a detailed overview of what we are planning for 2014.



## 4TH ON THE 3RD PATRIOTIC CONCERT

This concert will be held again this year at the Van Trease PAC center on the TCC campus at 81st and HWY169 on Sunday July 3, 7:30 PM. Cost per ticket is \$12 and is due by June 21 monthly meeting. Tickets will be purchased the following day and distributed the night of concert. Contact Barbara Cail at [barbcail@cox.net](mailto:barbcail@cox.net) or 918-299-5691 or sign up and pay at meeting. Last year we had about a dozen members and guests attend. Those attending expressed a great appreciation for the event and felt it should be on our calendar again this year. What a great Patriotic evening of music it was! Optional dinner is being planned for 5:45 PM.



KEN BEGLEY  
ILONA BEGLEY



### B&B Model "A" & "T" Parts

1 Blk. North of SE 15th and Anderson Rd. Turn East  
Same Day Shipping

Home: 769-2871  
Cell: 740-7812

12360 Max Lane  
Choctaw, OK 73020  
E-mail: [bandbmoda@cox.net](mailto:bandbmoda@cox.net)



**cotton pickin engines**  
Model A engine Work

Cell # 918-636-2787  
Ron Duke 918-341-9413

**Axles**  
**AT**ransmissions  
& **T**ransfers Inc.



SPECIALISTS ON  
TRUCK TRANSMISSIONS AND DIFFERENTIALS  
**RICHARD BOERSTLER**  
Toll Free: 1-877-495-7725

3244 N. LEWIS  
TULSA, OK 74110-1534

BUS. (918) 425-7725  
FAX (918) 425-7740

PROUD  
by TINKERBELL  
(JS)

*As I drove down the road with my friends, I realized something different from my past. It seems almost all the modern cars looked the same. Their owners are all hiding behind dark glass. When I stop at stop signs, I can't see if I know the owners. My owner and I want to be friendly to everyone. They can see us and we would like to wave at them, but we can't see who they are. If they don't know us they may think we are giving them a bad jester! They may even react offensively.*

*My owner said, "Tinkerbell, in these modern days a lot of good things have come about. A lot of people today though just don't want you to get to know them. In your young days, owners set high in their seats and wanted friends to smile and wave at them. These days owners seem to be afraid someone will see them! If they happen to have a window down, you will see some are driving from almost in the*

*middle of the front seat. Others are slumped down below the steering wheel. It looks like some are even laying down. It seems they are afraid if they set up straight they are a target for a shooting. They don't want people to know that is their car! I am glad all of the owners of Henrys Ladies feel proud of them. They set up high and straight in their seat. They keep the windows clean so everyone can see them smiling. I feel sorry for these modern car owners they don't realize what they are missing."*

COOKIE LIST

JUNE

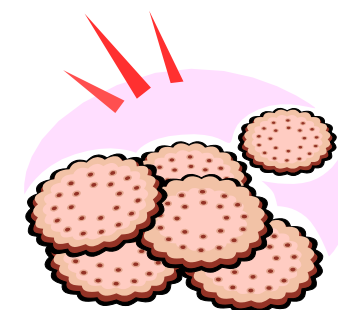
Mary Ann Reiser  
Janie Williams

JULY

Pat Wise  
Connie Hudson

SEPTEMBER

Loretta Benson  
Dorothy Smith



OCTOBER

Mayleta Duncan  
Margaret Soper

1606 BACK ACRE CIRCLE  
MOUNT AIRY, MD 21771



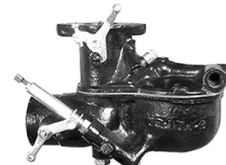
TOLL FREE  
Order # 800 255-1929  
Fax # 800 774-1930  
(U.S. and Canada Only)

Information #: (301)829-9880  
Overseas fax #: (301)829-9881

- ~ Our catalog contains over 3,900 Model A parts, each with a FULL description and illustration.
- ~ Many full page schematic drawings to help identify parts and assembly sequence.
- ~ Supplying quality by using over 90% U.S. made parts.
- ~ Serving the Model A restorer with quality parts since 1977.

Send for a FREE 194 page illustrated  
Model A catalog

WEB: [www.brattons.com](http://www.brattons.com)





*I have heard members taking about their "A" LEANING -- below may the answer.*

There are two causes for a Model A to lean to the left. Over the years many of the Model A's were driven with no passenger. If the driver was a big man (or women) it compounded the problem. Over the years the spring leaves on the left side became weak and caused the car to lean. This could be the result of both front and rear leaf springs being weak. The other cause is the front end may have moved off center to the frame cross member.

The front spring leaf center bolt has a square head that fits into a square hole in the frame front cross member. This is what keeps the spring centered in the frame. Look at the front of the car from directly in front. Both ends of the front spring (spring eyes) should be approximately 1/4" above the top of the axle. If either spring eye (spring shackle connection) is resting on or very near the axle, the spring is too weak. Also observe the distance between the front brake rod and the shock absorber adjusting screw on each side of the car. They should be of equal distance on each side. If not, it is a good indication that the spring center bolt head has moved out of the frame cross member, thereby moving the frame and body off center and causing it to lean. Sometimes a lot of stress on the front spring will cause the front cross member to crack or a piece break out, allowing the frame to lean to one side.

All these things are correctable by welding the front cross member if needed, realigning spring in front cross member, or replacing a weak front spring. If the front spring is weak you are also in danger of causing wear on the tie-rod and drag link where they cross over. Very much wear on the tie-rod can result in a dangerous driving condition.

Thanks to Les Andrews for this answer.



## **NUTS AND BOLTS (OR MISCELLANEOUS Tidbits)**

by Ken Brust

I just returned home last night (June 2) from five weeks in Spain trying my best to learn a foreign language. I wasn't very successful but I did manage to find ten extra pounds I didn't need from all of the great food and wine!

I drove over to Marvin's garage this morning (June 3) to make sure our car was all ready for the trip to Kansas City. Everything checked out just fine so Ruthie is ready to go. I couldn't talk Marvin into trading me cars since his has the new air conditioning system in it so I guess Tory is going to have to suffer the heat. Unfortunately, it looks like she might suffer quite a bit after seeing the weather forecast for sunny skies and temperatures in the 90's. Woe is I.

Marvin and Linda can't go on this trip due to a family wedding but plan to meet Robert and Elaine Bullard for the Texas meet the following week. Bullards, if you are reading this, please know that we all miss you! Happy Trails to All

# LeBARON BONNEY

Company



*"I don't have to wonder when  
I order from LeBaron Bonney"*

-LeBaron Bonney Customer...Dubuque, IA

Over 100,000 Kits Sold!

- Upholstery Kits**
- Panel Sets**
- Tops ~ Fabrics**
- Parts & Accessories**

Since 1960, LeBaron Bonney has been providing award winning interiors and tops for Model A's and other Ford vehicles from 1928 thru 1962. Contact us today for a free literature package on your model and a free copy of our latest Parts & Accessories catalog.

1-800-221-5408 ~ [www.LebaronBonney.com](http://www.LebaronBonney.com)

6 Chestnut St., Amesbury, MA 01913

## Members' Birthdays

### JUNE

- 04 DeWayne Owens
- 13 Steven Reiser
- 15 Mitchell DuVall
- 16 Chris DuVall
- 19 Donald Wooldridge
- 22 Ann Cramer
- 28 Floy Anderson
- 30 George James

### July

- 02 Charlotte Clevenger
- 03 Delbert Riddle
- 04 Patricia Wise
- 07 Virginia Harris
- 07 Marvin Back
- 09 Elaine Bullard
- 12 Darla Blackwell
- 12 Linda Gougler
- 14 Ann Miller
- 19 James Bond
- 23 Jerry Conrad
- 23 Loretta House
- 24 Pauline Back

## Members' Anniversaries

**Harold & Virginia Helton**

June 3

**Don & Patricia Wise**

June 3

**Bud and Tonya Biesemeyer**

June 4

**Donald & Loretta House**

June 7

**Terry & Rhonda Cavnar**

June 8

**Mike & Lynne Lervig**

June 11

**Frankie & Connie Beene**

June 17

**Charles & Marlene Duke**

June 25

**Malcolm & Patty  
McDonald**

June 26

**David & Carol Hayes**

June 30

**Ed & Diane Foust**

July 3

**Fred & Doris LeMaster**

July 5

**Charles & Sandy Sewell**

July 9

**Chuck and Lisa Ramsey**

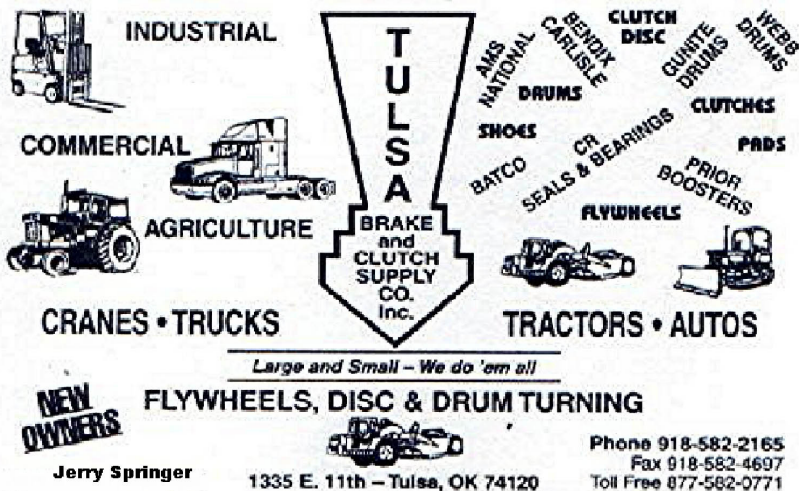
July 11

**Frank & Oleata Bohall**

July 17

**Jerry & Charlene Sloan**

July 18



**TULSA**  
BRAKE and CLUTCH SUPPLY CO. Inc.

INDUSTRIAL  
COMMERCIAL  
AGRICULTURE  
CRANES • TRUCKS  
TRACTORS • AUTOS

AMS NATIONAL  
BENDIX CARLISLE  
DRUMS  
SHOES  
BATCO  
SEALS & BEARINGS  
CLUTCH DISC  
QUINTE DRUMS  
WEBB DRUMS  
CLUTCHES  
PADS  
PRIOR BOOSTERS  
FLYWHEELS

Large and Small - We do 'em all!

**NEW OWNERS**  
FLYWHEELS, DISC & DRUM TURNING

Jerry Springer  
1335 E. 11th - Tulsa, OK 74120  
Phone 918-582-2165  
Fax 918-582-4697  
Toll Free 877-582-0771

## We've Revolutionized the way you find Model A Parts!

**FOUR CATALOGS TO CHOOSE FROM:**

- Coupe • Pickup • Open Car • Sedan

**CALL & ORDER YOUR  
FREE CATALOG TODAY**

**AND ASK ABOUT OUR MONTHLY SPECIAL!**

**1-888-879-6453**

[www.mikes-afordable.com](http://www.mikes-afordable.com)



**ALTERNATOR ■ STARTERS ■ GENERATORS**

## SHORTY'S AUTO ELECTRIC

Automotive, Industrial & Marine

**Mike Richardson**

(918) 430-0359  
(918) 430-0967

2604 E. APACHE  
TULSA, OK 74110

1-800-288-3601  
FAX 834-3866

918-834-3601

## Lester's

Gear & Automatic Parts  
Specialist From Flywheel  
Thru Differential

Standard / Automatic

129 N. Lewis  
Tulsa, OK 74110



**HUGH K. DAWSON**  
 AUDIT CONSULTANT  
 Certified Internal Auditor  
 Certified Fraud Examiner

*Joint Interest - Fraud - Security*

8431 Gary Dr. Rt. 16  
 Tulsa, OK 74131  
 (918) 224-2513



**TO LEND:** Steering Wheel Puller - makes it easy to remove tight wheels from the shaft. Call Susan 918.341-8050

**WANTED:** A good used open car hauler trailer, dove tail - contact Rodger Johnson - 918.274-8887

**TRADE:** Two 1930 seal beam headlights for two 1930 single bulb headlights, contact Charlie Sewell at 918.437-5743.

**FOR SALE:** 1929 "NEW" floor board (emergency brake on right side of gear shift), asking price \$35. If interested contact Bobby Williamson at 918-543-2987.

**FOR SALE:** 1929 Model-A Roadster with rumble seat. Looks, runs and drives great. Frame off restoration. Bronson yellow body, seal brown trim, orange wheels and pin stripe. Firestone white wall tires. \$16,800 Marvin Mellage. (918) 633-4875



## WELCOME NEW MEMBER

Troy & Floy Anderson  
 2313 Surrey Lane  
 Sapulpa, OK 74066  
 (H)918-224-8543  
 (c)918-230-6153  
 fande4347@sbcglobal.net  
 Birthday's  
 Troy August 21  
 Floy June 28  
 Anniversary November 13  
 1931 2 door sedan - black

### Club Jackets, Hats and More

If you're interested in purchasing a new jacket, hat or shirt with the club logo on them, here's the cost of each:

- Wind breaker - \$34  
 black nylon, windbreaker lining
  - Jacket - \$44  
 black nylon, flannel lined
  - Polo Shirt - \$33 Men's and \$31 Women's
  - T-Shirt - \$12 Men's and \$18 Women's  
 front and back print
  - Ball Cap - \$10,  
 khaki cotton twill w/embroidered club logo only
  - Ivy Cap \$17  
 black, embroidered club logo on back
  - Sweatshirt \$17  
 29 colors to select from, club logo on left front
- For ordering or more information please call Benny Benson at 918.296.5000 or see him at the next business meeting or club function.

### Detail Tool & Machine



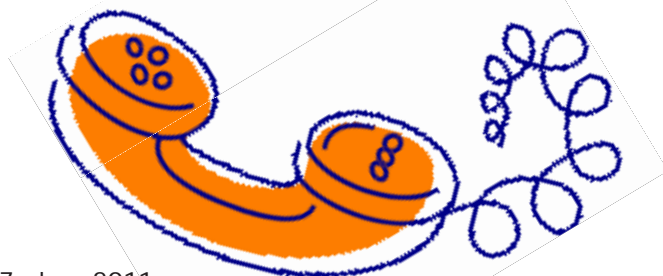
Wire EDM Specialist  
 Tooling & Job Shop Work  
 Conventional and CNC Machining

Dave Pilmaier (918) 697-2589 cell  
 detailtool@fairpoint.net (918) 476-9476 fax

### Calling Committee

Chairperson Linda Mellage  
 918.451.9179 - 918.629.2978 cell

Tory Brust - 918.728.2015  
 Jerry Conrad - 918.749.3730  
 Harold Helton - 918.230.4906  
 Jesse Reed - 918.451.2124  
 Mary Ann Reiser - 918.272.5443  
 Howard Williams - 918.682.1694





## OFFICERS AND BOARD MEMBERS

President.....	Don Reed-----	918.451-2124	-----	donreed@windstream.net
Vice President .....	Connie Hudson -----	918.269.7240	-----	chudson@catoosa.k12.ok.us
Secretary .....	Barbara Cail -----	918.299.5691	-----	barbcail@cox.net
Treasurer .....	Virginia Harris-----	918.451.1957	-----	olhvlh@windstream.net
Director .....	Roy Cail -----	918.299.5691	-----	roycail@cox.net
Director .....	Benny Benson -----	918.296.5000	-----	blenson426@sbcglobal.net
Director .....	Don Wise-----	918.245.0555	-----	dpwise@cox.net

## COMMITTEE CHAIRPERSON

Advertising/Website/Database ..	Roy Cail -----	918.299.5691	-----	roycail@cox.net
Calling Committee .....	Linda Mellage -----	918.451.9179	-----	(cell) 918.629.2978
Editor.....	Pam Lundy-----			lundypa@tulsaschools.org
Publisher .....	Connie Hudson -----	918.269.7240	-----	chudson@catoosa.k12.ok.us
New Members.....	Virginia Harris-----	918.451.1957	-----	olhvlh@windstream.net
Photographer.....	Barbara Cail -----	918.299.5691	-----	barbcail@cox.net
Scrap Book.....	Jerry Conrad -----	918.749.3730	-----	jerryconrad@sbcglobal.net
Programs & Entertainment .....	Vacant			
Refreshments: .....	Vacant			
Clothing, tags, etc. ....	Benny Benson -----	918.296.5000	-----	benson426@sbcglobal.net
Sunshine Person .....	Vacant			
Tours .....	Don Wise-----	918.245-0555	-----	dpwise@cox.net
Activities and Events .....	Don Reed &-----	918.451-2124	-----	donreed@windstream.net
.....	Connie Hudson -----	918.269.7240	-----	chudson@catoosa.k12.ok.us
Supplies.....	Linda Mellage -----	918.451.9179	-----	(cell) 918.629.2978
Cookies .....	Harold Helton -----	918.960.2198	-----	heltoha@tulsaschools.org

### THE WORLD'S LARGEST SUPPLIER OF 1909-31 FORD PARTS!

*We Feature American Made Parts*

Visit Our Website *New Products Added Daily!*  
[www.snydersantiqueauto.com](http://www.snydersantiqueauto.com)

Toll Free Ordering:  
**(888) 262-5712**

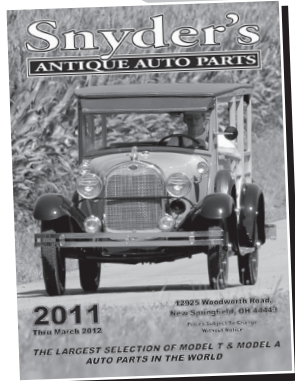
On-Line Ordering:  
[snydersantiqueauto.com](http://snydersantiqueauto.com)

Outside the U.S. or  
for Technical Assistance  
**(330) 549-5313**

**Fax: (330) 549-2211**

e-mail: [don@snydersantiqueauto.com](mailto:don@snydersantiqueauto.com)

**FREE**  
Fully Illustrated  
**2011 CATALOG\***



**Snyder's**  
**ANTIQUE AUTO PARTS**

12925 Woodworth Road ♦ New Springfield, OH 44443

\*\$10.00 Outside the U.S., Canada and Mexico

### July Breakfast AND TOUR of TULSA AIR AND SPACE MUSEUM:

Following breakfast on Saturday July 2 at the Delta Cafe, 8 AM in Owasso, Ken Brust has arranged for a tour of the Tulsa Air and Space Museum. We will caravan from Owasso to the museum. The tour will start at 10 AM and will cost \$10 per person. If you have not been to the museum this is a great opportunity and if you have been then you know what a nice place it is to visit again. We want to thank Ken for arranging the tour.







# Breakfast





## 2011 Calendar of Events

Month/Date	Event or Activity	Location	Time
June 5-10	Regional Meeting Host Plain Ol' A's	Kansas City, KS	
June 9-12	Leake Auction	TBA	
June 16-19	Texas Tour	Conroe, TX	
June 21	Monthly Meeting	Lewis & Clark	7 p
June 28	Regional 2014 Brainstorming session #2	Catoosa School Admin. Bldg	6:30 p
July 2	Breakfast	Delta Cafe	8 a
	Tulsa Air and Space Museum after Breakfast		
July 3	4th on the 3rd Patriotic Concert	TCC Van Trease PAC	7:30 p
	Dinner before concert	TBA	5:45 p
July 16	Porter Peach Parade and Lunch	Porter	TBA
July 19	Monthly Meeting/Ice Cream Social	Lewis and Clark	7 p
July 23	"The Drunkard" Performance	Tulsa	TBA
August 6	Breakfast	TBA	8 a.
August 14 (Sunday)	Will Rogers/Wiley Post Fly-in	Oologah	TBA
	Breakfast and Car show/plane fly-ins	Will Roger's birthplace	
August 20	Picnic	TBA	TBA
	(Featuring 1931 Model A vehicles)		
September 3	Breakfast	TBA	8 a
September 10	Play Day/International Model A Ford Day	Local	9:30 a
September 17	NEW! Bartlesville Fly-In/Car Show	Bartlesville	TBA
October 1	Breakfast "Fill an A" Food Drive	Sand Springs IHOP	8 a
	Food Drive will be held at WalMart, Sand Springs following breakfast		
October 18	Monthly Meeting	Lewis and Clark	7 p
October 21-23	Fall Tour	(Tentative dates)	TBA
November 5	Breakfast	TBA	8 a.
November 6	Daylight Savings Time ends		2 a
November 11 (Friday)	Veteran's Parade on 11/11/11	Claremore	TBA
November 11	Chili Supper and Auction	Lewis and Clark	TBA
November 17	Thanksgiving Buffet at OSU	Okmulgee	
December 3	Pancake Breakfast	Broken Arrow	TBA
December 3	Broken Arrow Christmas Parade	Broken Arrow	
December 10	Owasso and Catoosa Parades		
December 17	Christmas Party	Tentative	TBA
June 11-15, 2012	Midwest Regional/Central Iowa	Altoona, IA	
June 18-22, 2012	National MAFCA Convention	Marquette/Ishpeming, MI	
2013	Midwest Regional	Wichita, KS	
2014	Midwest Regional Meeting	Tulsa, OK	



## About the Tulsa Model A Ford Club

Chapter #8231 of the Model A Club of America (MAFCA)

This is the official publication of the Tulsa Chapter of Model A Ford Club of America. This monthly newsletter is mailed to members, prospective members, advertisers and editors of similar publications. It's purpose is to keep you informed of what has taken place, scheduled activities and to promote fellowship among club members.

Members are encouraged to submit articles containing technical or any club related information. Articles must reach the editor by the 5th of the month to insure publication in that month's newsletter. Articles received after that will appear in a following newsletter.

Membership dues for the Tulsa Model A Ford Club are \$20 per family annually payable at the end of the year. Contact the New Member chairperson for new memberships and the Treasurer for renewals. The Tulsa Model A Ford Club recommends membership in the national MAFCA organization.

Members may advertise at no cost, non-business ads in the newsletter For Sale, Wanted or Trade section. Businesses may advertise with cost by the ad size, (business card size or 1/4 page) in the advertising section. The number of ads are restricted to space available in the Rumble Sheet. Contact the Advertising chairperson for details.

---

### Meeting Schedule

- Business Meeting - 7:00 p.m. 3rd Tuesday of each month at Lewis & Clark Middle School, 737 South Garnett, Tulsa
- Breakfast - 8:00 a.m., 1st Saturday of each month, location to be announced
- Board Meeting - 6:30 p.m., 1st Tuesday of each month, Martin Library, 2601 South Garnett Road, Tulsa

TO SUBMIT AN ARTICLE, LETTER, OR FOR SALE OR TRADE, EMAIL:

Pam Lundy  
lundypa@tulsaschools.org

### The Rumble Sheet

Tulsa Model A Ford Club  
P. O. Box 691524  
Tulsa, OK 74169-1524

